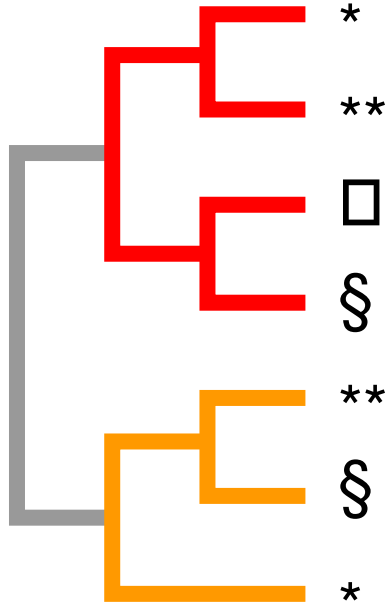


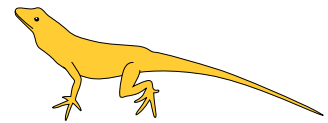
Anolis Lizards of the Greater Antilles: Possible Hypotheses

Hypothesis One: Lizards living on the same island are most closely related.

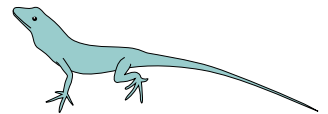


Key

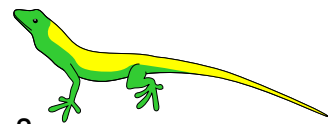
- Cuba
- Hispaniola
- Puerto Rico



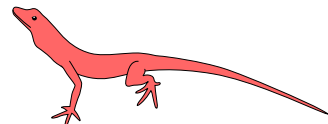
* Stocky body, long hindlimbs



** Short body, slender legs and tail



§ Large toe pads, can change color



□ Long forelimbs, flattened body

Hypothesis Two: Lizards with the same body type and habitat are most closely related.

